

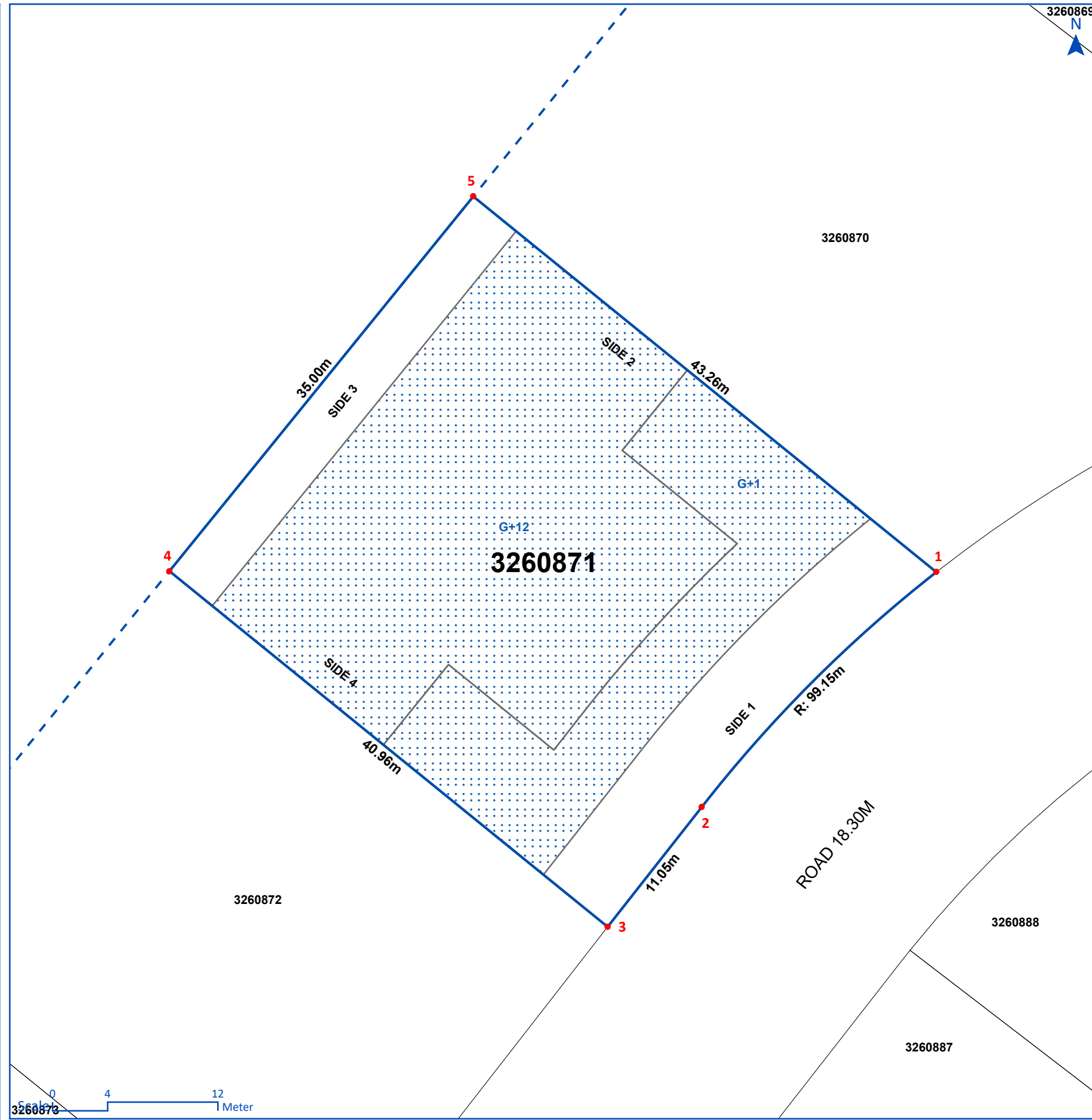
PLOT NUMBER	3260871	
OLD NUMBER	P1.A003	
PLOT AREA	1,446.59 M ² (15,570.97 FT ²)	
MAX. GFA	8,790.49 M ² (94,620.05 FT ²)	
MAX. HEIGHT	G+12	
MAX. COVERAGE	N/A	
SETBACK (M)	BUILDING	PODIUM
SIDE (1)	SEE DRAWING	N/A
SIDE (2)	0	N/A
SIDE (3)	4	N/A
SIDE (4)	0	N/A

LAND USE / GFA SPLIT

RESIDENTIAL : APARTMENT

PLOT COORDINATES		
ID	EAST	NORTH
1	500334.758	2791496.874
2	500317.733	2791479.825
3	500310.905	2791471.140
4	500279.101	2791496.944
5	500301.153	2791524.123

COORDINATES SYSTEM IS DLTM



3260869
N

PLOT DETAILS

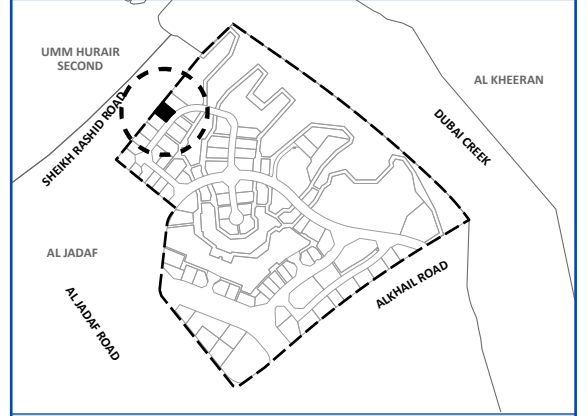
MASTER DEVELOPER

JADDAF WATERFRONT L.L.C

PROJECT NAME

JADDAF WATERFRONT

LOCATION MAP



COMMUNITY

Al Jaddaf

LEGEND

- PROJECT LIMIT
- PLOT
- BUILDING LIMIT



For live information please scan the QR code or visit <https://gis.dda.gov.ae/dis/?PlotNumber=3260871>

GENERAL NOTES

- PARKING: ONE BAY FOR EACH UNIT LESS THAN OR EQUAL TO 150 SQ.M GFA AND TWO BAYS FOR EACH UNIT EXCEEDING 150 SQ.M GFA.
- BUILDING ELEVATIONS SHOULD FOLLOW THE ARCHITECTURAL THEME OF JADDAF WATERFRONT.
- NOC FROM DUBAI MUNICIPALITY COASTAL ZONE AND WATERWAYS MANAGEMENT SECTION TO BE OBTAINED.
- THIS SITE PLAN TO BE READ IN CONJUNCTION WITH THE PLOT GUIDELINES FOR ADDITIONAL INFORMATION.

THIS DOCUMENT IS FOR ILLUSTRATION PURPOSE. FINAL DATA CAN BE OBTAINED THROUGH SITE PLAN AND DEMARCATION CERTIFICATES REQUESTS.

ISSUE DATE 17/07/2023 02:39:57 PM